

- 1 Michael Reindel
configuring HR0124, 2025
print of *tote HR0124* on dibond board, mdf,
chipboard, galvanised steel, lacquer, wire,
fragment of *clamp* (2024) *connector* (2024)
print on dibond board
150 x 92 x 15 cm
- 2 Bartholomaeus Wächter
Untitled (leveled jig and residual image), 2025
PEEK, print on aluminum, aluminum, POM-C,
stainless steel (foot)
333 x 39 x 11 cm

***configuring HR0124 & Untitled (leveled jig
and residual image)***

Michael Reindel & Bartholomaeus Wächter

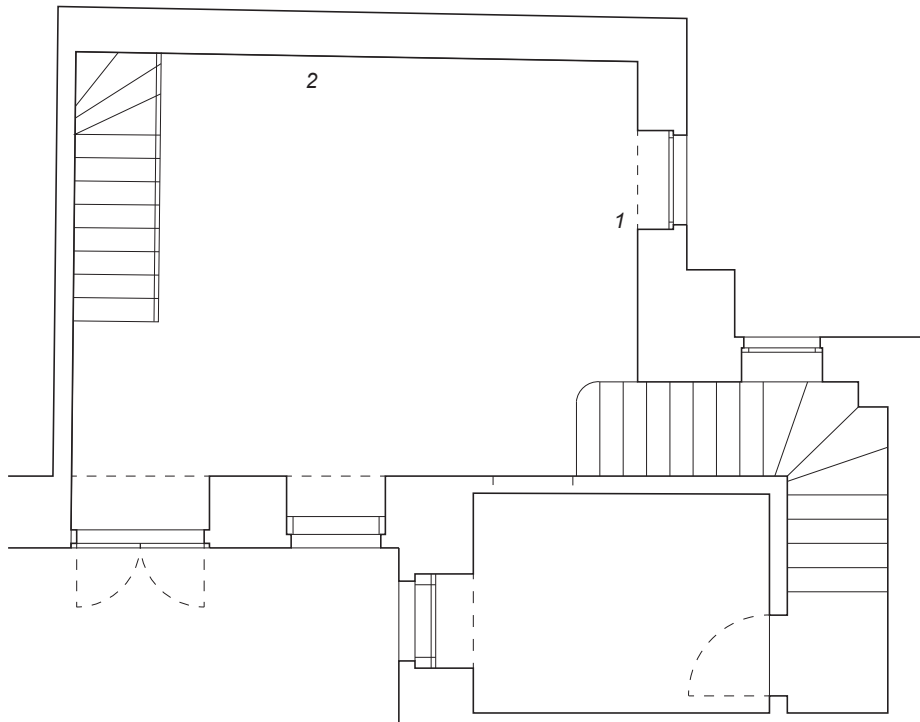
Opening and conversation: 17 April, 2025, 18h–21h

Location: Linke Wienzeile 36/1c, 1060 Wien

Exhibition: 18 April – 26 April, 2025

Opening hours: Saturday, 13h–17h & by appointment

Part of the format *Insights of a Practice*



Insights of a Practice is a new format that will unfold across March, April and May. As a pilot, this project seeks to place a focus on the conversations surrounding artistic practice, using the visual language of the works on view as a key pillar to anchor these discussions. At its core, the format invites a richer understanding of the artists' processes, spatial decisions, and the active dialogue between the works, the artists, and the space itself. In three distinct encounters, each bridging two artistic practices, the artists are invited to select one work each to present in the exhibition space. During the opening of each encounter, the audience is invited to engage with the motivations and methods behind the creation of the works, moving beyond what is immediately visible.

Michael Reindel works between the motorway junction Bayrisches Vogtland, film sets, the exhibition 'The Great Repair' at the Akademie der Künste Berlin, the Amazon Fulfillment Center NUE1 and a disused quarry. Within this relational network, sculptures are built, dismantled, transformed, rebuilt and embedded in geopolitical realities and autofictional narratives. In the way the works intertwine with global and local conditions, they aspire to interact with the infrastructural processes that shape our reality. Together with his mother, he packs his own sculptures into Amazon's Totes alongside his family's estate, performs in their logistics center and films regional environmentalists in a former gravel extraction area with Vik Bayer.

Bartholomaeus Wächter explores the intersection between self-produced objects and those that are standardized or industrially manufactured. He engages with mass production processes and, in doing so, creates his own systems. Assembled into objects, these systems dictate movement through space, suggest ways of interacting, and introduce a sense of order or structure. In 2023, he co-founded the exhibition format Garage Show. His works were recently shown at Plateau (AT), Gallery Wannerth-dejaco (Parallel Vienna), Salzburger Kunstverein (AT), Chess Club (DE), BCK29 (NL), Schauspielhaus Wien (AT), Kunsthalle Exnergasse (AT), and Haus Wien (AT).